

IMPORTANT: Please take the time to read through the ENTIRE instructions prior to starting any work.

Precautions

1. Ensure normal safety precautions are taken when using tools, ladder and walking on roofs.
2. Do not cut any structural members.
3. Install only in dry weather.

Installation Pointers

When determining location of the curb-mounted solar attic fan, consider potential problems such as objects shading the unit during certain times of the day (southern exposure is recommended).

Tools Required

- Phillips Screwdriver
- Ladder
- Reciprocating Saw
- Utility Knife

Materials/Tools To Build Curb

- Pressure-Treated Lumber (2" x 6" or 2" x 8")
- Hand or Circular Saw
- Wood Screws
- Galvanized Nails
- Measuring Tape
- Roofing Material (matching existing roofing)

Step 1 Assemble a curb with the **outside** dimensions of 21.75" x 21.75" (see Figure 1). Use pressure-treated lumber secured at all four corners with wood screws or galvanized nails (use 2" x 6" or larger lumber - adhere to local building codes).

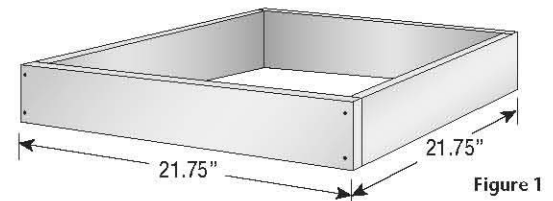


Figure 1

Step 2 Locate an area that is between the trusses to install the solar attic fan (southern exposure is recommended). Mount the curb to the deck centering the curb over the space between the trusses.

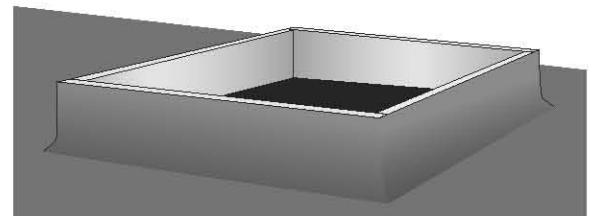


Figure 2

Step 3 Using a reciprocating saw, cut out opening. **DO NOT CUT STRUCTURAL FRAMING.**

Step 4 Place curb over opening and toe-nail into existing roofing using galvanized nails. If necessary, building blocking to ensure the curb is secure. Wrap curb with roofing material to prevent leaking (see Figure 2).

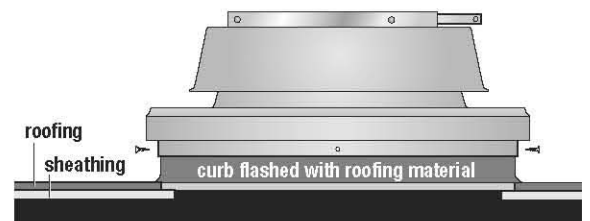


Figure 3

Step 5 Attached the solar attic fan to the curb using (4) screws provided through the pre-drilled holes on the solar attic fan curb lip (see Figure 3).

Step 6 Adjust angle of solar panel to position it will gather the most amount of sunlight (panel facing due south is recommended). To adjust, remove center screw on solar panel bracket and swinging arm up to desired position. Re-attach screw (see Figure 4).

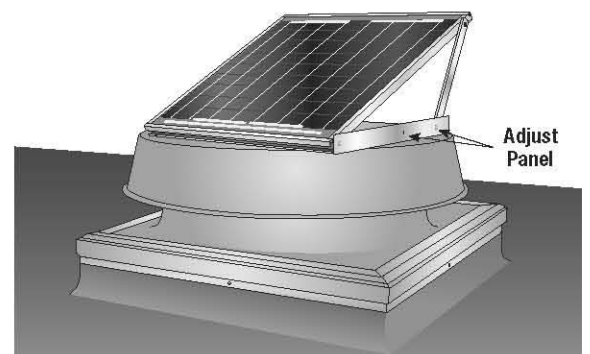


Figure 4